

Oregon HFMA Summer Meeting 2011

Teresa D. Davis, RN
OneHealthPort

OneHealthPort History

- Incubated by the Washington Healthcare Forum
 - Forum is the Healthcare “CEO Club”
- OneHealthPort founded as a for-profit corp. July 2002
 - Run it like a business – a “for-profit barely” business
 - Entity needs to be able to take risk and be self-sustaining
 - Initial objective – deliver security service to market
 - Long term – put in place a reusable business infrastructure
- Founders were those Forum members willing to contribute capital
 - Plans, hospitals and multi-specialty group practice
 - Over the years additional orgs have been added to Board

OneHealthPort

Plan Founders



FIRST CHOICE HEALTH

Incubated by WA Healthcare Forum

OneHealthPort...

Reduces the cost and complexity of health information exchange

Three Main Service Offerings

- Security Service
- Commercial Applications
- Strategic Solutions/Lead Organization

Non-Founder Board Members

- MultiCare
- Virginia Mason
- WA State Hospital Association
- WA State Medical Association

Provider Founders

**The
Everett
Clinic**



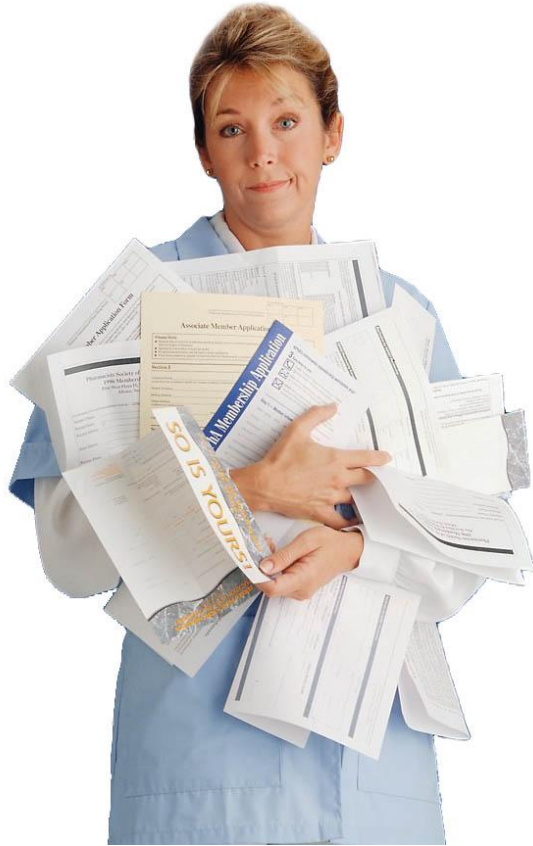
OneHealthPort

The Business Model

- Single Sign-On Security Service
 - No juggling log-ins or multiple passwords for different local health plan and hospital Web sites, OneHealthPort allows you to manage your online healthcare services in one place.
 - Free of charge to health professionals.
 - Provider can register once, confirm identity once, sign one agreement to satisfy HIPAA regulations, use one digital credential.
 - OneHealthPort completes the organization vetting and is responsible for customer support calls.

Making it Easier To Business Together

Providers – Simplify,
Reduce Variation



Health Plans – Go Electronic,
Reduce Phone Calls



Single Sign On Metrics

- 43,000 Organizations in All States
- 110,000 Subscribers in All States
- 32 Relying Party sites completed
- 5 new WA sites on board in 2011-12
- 4 new OR sites on board in 2011-12

Oregon Health Plan Participation

- **Health Plans Active**

- Aetna
- CIGNA
- First Choice Health
- LifeWise Health Plan of OR
- Regence BCBS of OR
- PacificSource Health Plans
- Providence Health Plans

- **Health Plans joining in 2011-12**

- HealthNet-August 2011
- Samaritan Health Plans-August 2011
- CareOregon TBD
- UnitedHealth TBD
- Kaiser –unknown
- ODS- unknown

SSO Progress in Oregon

- **Metrics**

- **4,731** Oregon provider organizations registered
- **11,777** individuals within Oregon provider orgs registered.

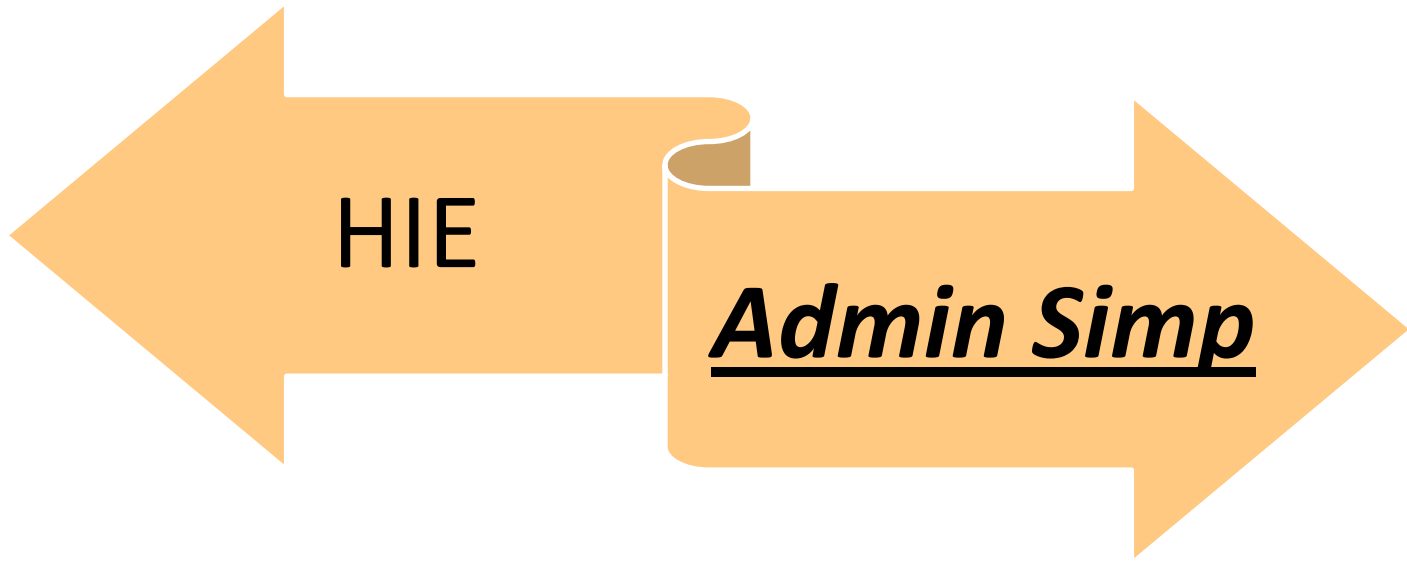
*numbers through 6/13/2011

A Lot Has Been Going On Since 2009



OneHealthPort Washington State

- State of WA seeks partners on Admin Simp and HIE
 - Legislature passed SSB 5346 and SSB 5501 in 2009
 - Created the Lead Organization model
- OneHealthPort is WA's Lead Org for Admin Simp, HIE
 - Private sector leadership, public sector/community oversight

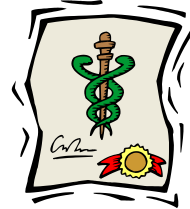


HIE

Admin Simp

SB5346 calls for wide spread adoption of 'best practices' in four areas

1. Credentialing



2. Eligibility & Benefits



3. Prospective Review



4. Claims Processing



OneHealthPort tools

- Administrative Simplification
 - Provider Participation in Validation Activities
 - Best Practice Information
 - Payer Adoption Matrix
 - Provider Adoption Report from Health Plans
 - Stakeholder Groups
 - Policies and Guidelines
 - 2011 Statewide Workshops

Provider Data Service-Credentialing Value Proposition

- The problem:
 - Providers fill out multiple forms for health plans and hospitals
 - Data elements largely the same and much of the info is available online
- The solution:
 - Providers fill initial application once/upload documents
 - Credentialing entities access shared data
 - Accessible through the OneHealthPort login
 - Free for all providers
 - Safe and secure database

Credentialing Status Update

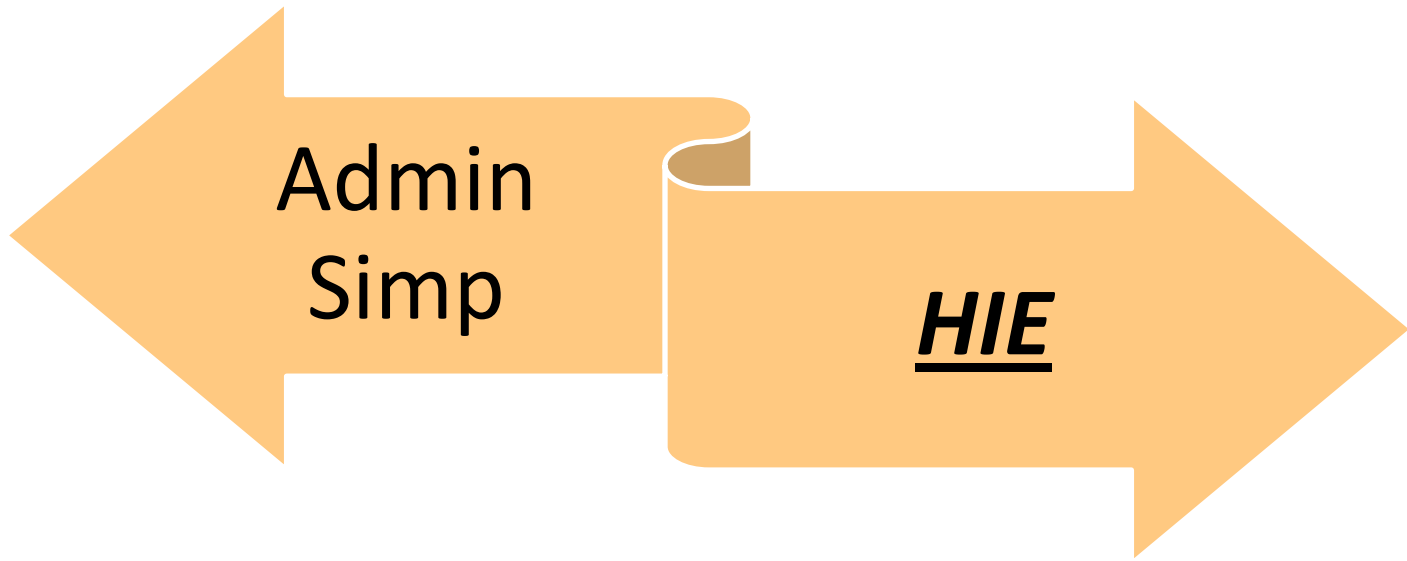
- ProviderSource rolled out November 2010
 - 4300 provider records created, 400 attested
- Client Portal rolled out February 2011
 - 12 out of 13 major health plans contracted

Now It's About Adoption

*One*HealthPort

www.onehealthport.com

1. Payer Adoption Matrix
2. Provider Adoption Reports



Admin
Simp

HIE

Your Information Trading Partners



Federal Commitment

\$46 Billion in Stimulus Funds

New Incentives for Adoption

New Medicare & Medicaid payment incentives for HIT adoption and **Meaningful Use**

- \$23 billion in expected payments through Medicare to hospitals & physicians
- \$21 billion in expected payments through Medicaid
- ~\$44 billion expected outlays, 2011-2016

Appropriations for HIE

\$564 million for HIE development

- Funneled largely through States or qualified State-designated entities
- For planning and/or implementation
- **\$11.3M for WA over four years**

Appropriations for Health IT

\$1.2 billion for loans, grants & technical assistance for:

- Regional Extension Centers (\$598M)
- EHR State Loan Fund
- Workforce Training
- Research and Demonstrations

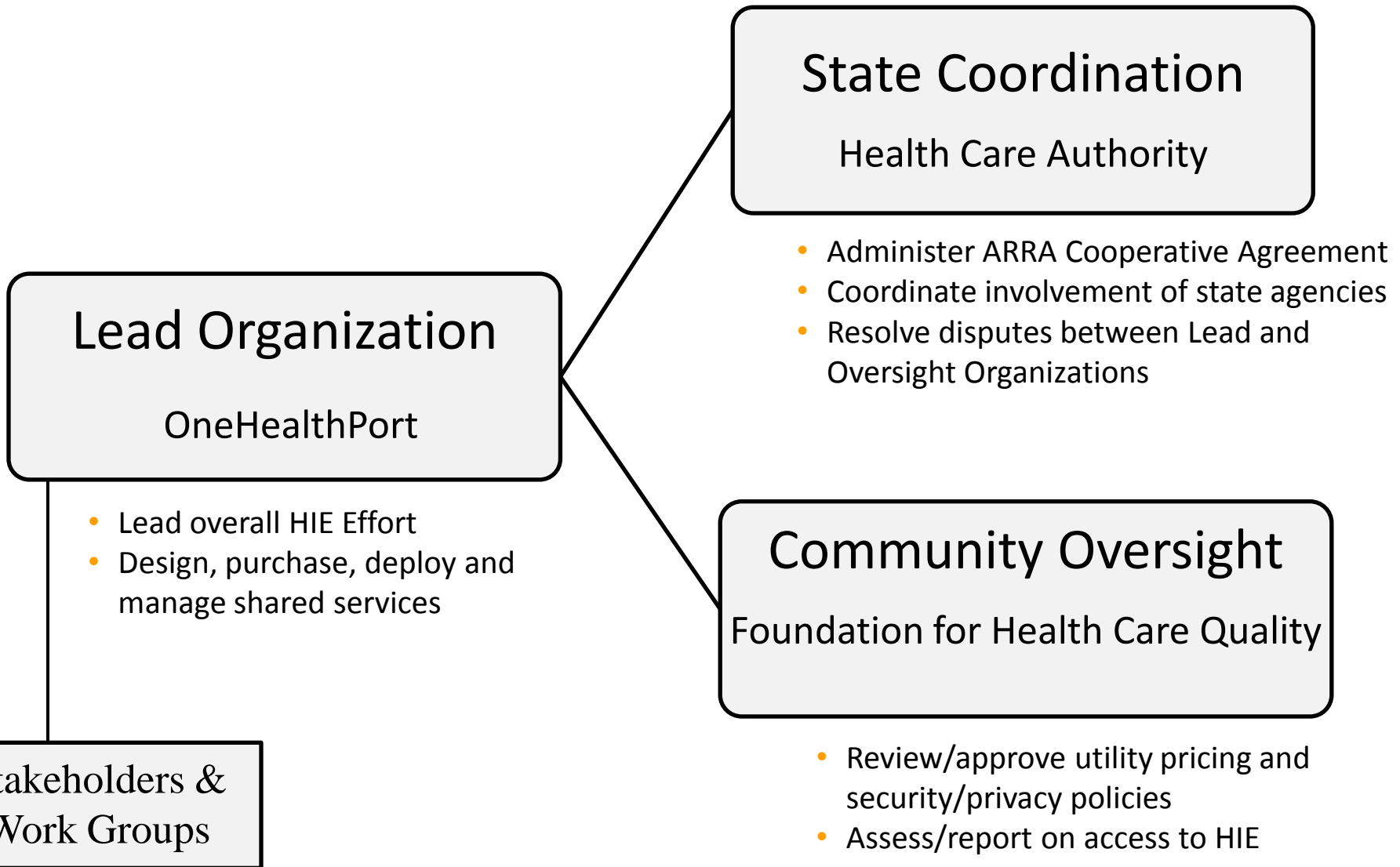
Community Health Centers

\$1.5 billion in grants through HRSA for construction, renovation and equipment, including acquisition of HIT systems

Broadband and Telehealth

\$4.3 billion for broadband & \$2.5 billion for distance learning/ telehealth grants

HIE “Utility” Governance Model



What You Need to Know About the HIE

- Connect **once**, exchange clinical/administrative information with your trading partners
- Help meet Meaningful Use – testing
- Simplified registration and connection
- Low pricing – subsidized by federal funds
 - As little as \$600 per year for small practices
 - Early adopters welcome!
- HIE went live in June –we have our first contract-WA State Medicaid (DSHS)
- We have several contracts in final stages of completion

What's Next?

- OneHealthPort is a community solution to complex issues.
- Time is Money and there isn't an abundance of either.
- WA and OR committees that we serve are both brainstorming creative ideas for the future.

Thank You

Teresa D. Davis, RN

206.624.3128 ext 152

tdavis@onehealthport.com

www.onehealthport.com